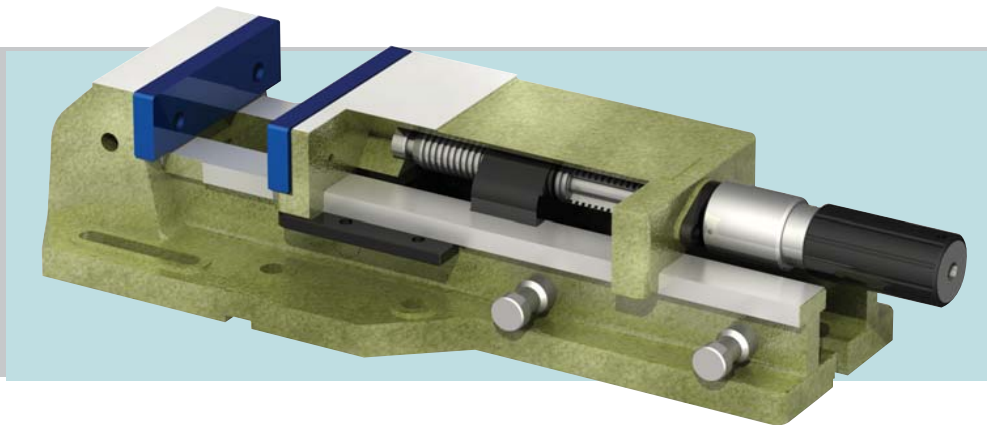


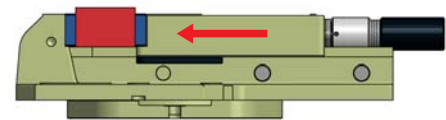
high pressure manual vises

Arnold Classic with Hydraulic Booster

High pressure ARNOLD Classic vises with HYDRAULIC BOOSTER achieve a clamping force of up to 8 tons (17,600 lbs) with the effortless turning of the handle. This makes them ideal for heavy duty clamping in milling, drilling and threading applications.



- 0.01mm (0.0004") clamping repeatability.
- Monoblock design avoids deformations with high pressure and offers great rigidity.
- Large opening up to 375 mm (15.76"); even more with two part body!
- Clamping force from 2.4 to 8 tons (5,250 to 17,600 lbs) depending on the size.
- Fitted with a high pressure hydraulic intensifier which does not require any external supply.
- The force applied by the high pressure spindle is transmitted to the work-piece in the exact center of the clamping jaw.
- Repeatable clamping force avoids repositioning the work-piece from one day to the next. Ideal for long production runs.
- Optional power regulator.
- Up to seven different types of standard jaws.



Optional Power Regulator



Optional Swivel Base

Available in 3 versions

1. Standard vise.

- Standard vise is mounted to the machine table through holes and slots.
- Can be supplied with a swivel base.



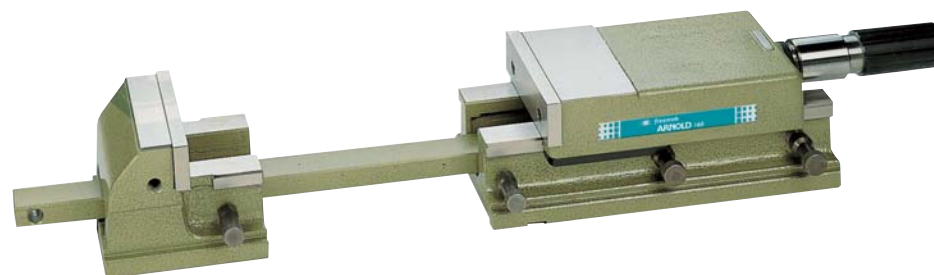
2. Straight vise.

- A narrower body enables closer side-by-side mounting; ideal to hold large parts with multiple vises.

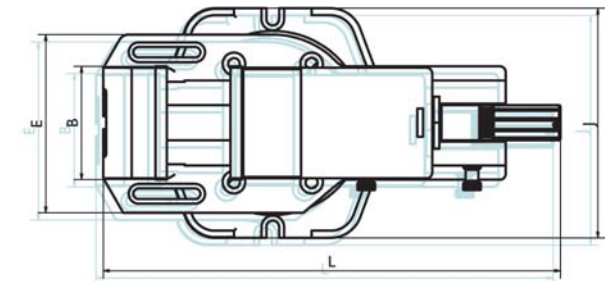
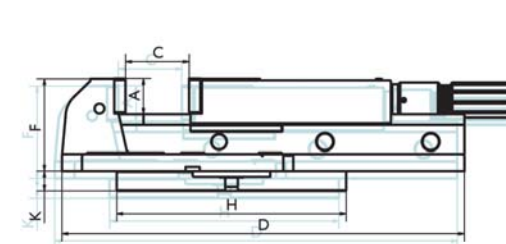


3. Two part straight vise.

- Able to clamp any work-piece that will fit on your machine.
- Clamps the work-pieces on top of the guides or on top of the table.



Size	090	125	160	200
Arnold Classic vise	010 010 090	010 010 125	010 010 160	010 010 200
Arnold Classic vise with regulator		010 110 125	010 110 160	010 110 200
Arnold Classic vise with swivel base	010 011 090	010 011 125	010 011 160	010 011 200
Arnold Classic vise with swivel base + regulator		010 111 125	010 111 160	010 111 200
Arnold Classic straight body vise	010 012 090	010 012 125	010 012 160	010 012 200
Arnold Classic straight body vise with regulator		010 112 125	010 112 160	010 112 200
Two part Arnold Classic vise			010 013 160	010 013 200
Clamping force (kg / lbs)	2.500 / 5,500	4.000 / 8,800	5.000 / 11,000	8.000 / 17,600
A (mm / inches)	40 / 1.57	40 / 1.57	50 / 1.97	63 / 2.48
B (mm / inches)	90 / 3.54	125 / 4.92	160 / 6.30	200 / 7.87
C - Clamping range 1 (mm / inches)	0-80 / 0-3.15	0-105 / 0-4.13	0-155 / 0-6.10	0-210 / 0-8.27
C - Clamping range 2 (mm / inches)	75-155 / 2.95-6.10	100-205 / 3.94-8.07	150-305 / 5.91-12.01	165-375 / 6.50-14.76
D (mm / inches)	355 / 13.98	425 / 16.73	570 / 22.44	680 / 26.77
E (mm / inches)	160 / 6.30	195 / 7.68	250 / 9.84	300 / 11.81
F - Standard base (mm / inches)	92 / 3.62	107 / 4.21	130 / 5.12	160 / 6.30
F - Straight vise (mm / inches)	92 / 3.62	112 / 4.41	139 / 5.47	164 / 6.46
L (mm / inches)	415-570 / 16.34-22.44	480-685 / 18.90-26.97	565-870 / 22.24-34.25	720-1.095 / 28.35-43.11
Vise weight (kg / lbs)	13 / 29	26 / 57	51 / 112	94 / 207
Optional swivel base	800 450 090	800 450 125	800 450 160	800 450 200
H (mm / inches)	220 / 8.66	264 / 10.39	325 / 12.79	400 / 15.75
J (mm / inches)	230 / 9.06	270 / 10.63	325 / 12.79	400 / 15.75
K (mm / inches)	25 / 0.98	28 / 1.10	32 / 1.26	45 / 1.77
Swivel base weight (kg)	5 / 11	8 / 18	15 / 33	32 / 70



Supplied with

- base body
- hydraulic spindle
- 1 set of plain jaws
- 1 handle
- instruction manual

