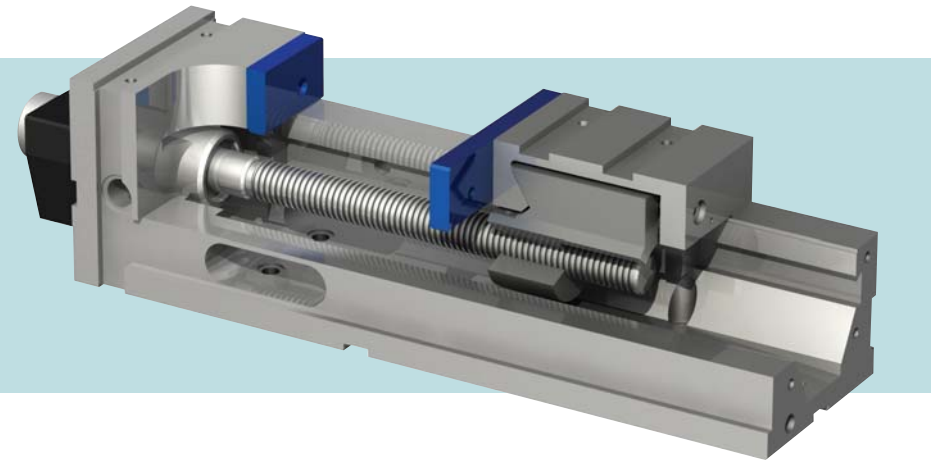


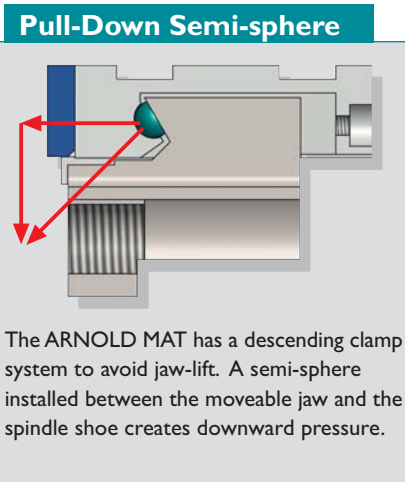
high pressure manual vises

Arnold Mat "Prox"

High Pressure ARNOLD MAT PROX Vises clamp towards the operator and keep the length constant irrespective of the size of the work-piece - ideal for use in machining centers.

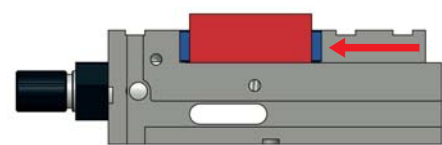
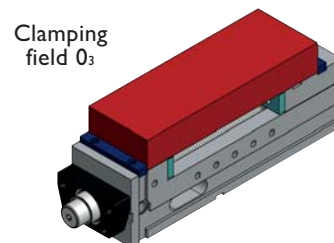
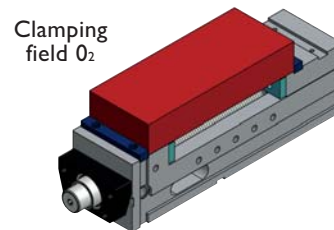
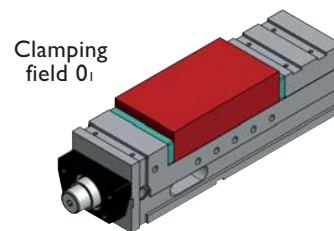


- Possible working positions: supported on the base, on the side or on the keyways vertically.
- Suitable for working in horizontal and vertical machining centers.
- All surfaces ground with a parallelism and perpendicularity of 0.02 mm (0.0008").
- 0,01 mm (0.0004") clamping repeatability.
- Monoblock design avoids deformations due to high pressure and offers great rigidity.
- High pressure hydraulic intensifier.
- The spindle houses the handle on the rear part of the vise fixed head.

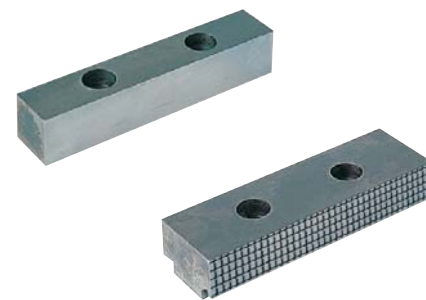


Clamping possibilities

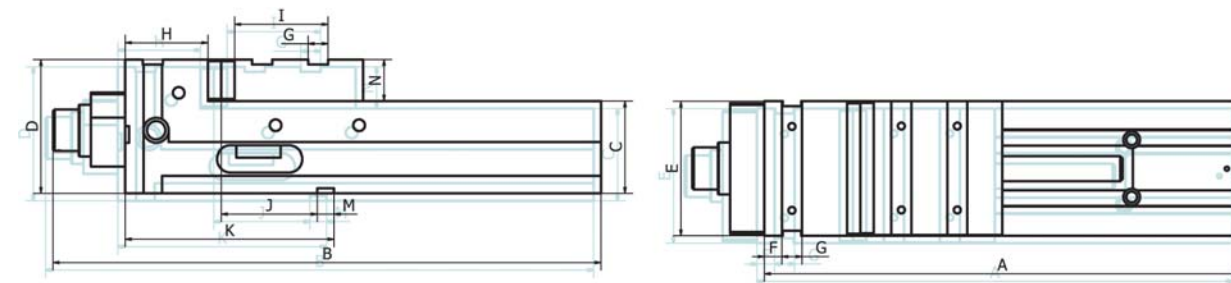
The ARNOLD mat prox. clamps on the opposite direction to the rest, i.e.: it clamps towards the fixed head. This system enables the operator to be able to place large or heavy work-pieces in the vise with more ease.



- Clamping force is 5 tons (11,000 lbs).
- Side windows to enable the interior cleaning of the vises.
- Ideal for long machining cycles.



Size	160	200
Arnold Mat Prox	080 200 160	080 200 200
Clamping force (kg)	5.000 / 11,000	5.000 / 11,000
A (mm / inches)	570 / 22.44	570 / 22.44
B (mm / inches)	676 / 26.61	676 / 26.61
C -0.02 (mm / inches)	110 / 4.33	110 / 4.33
D (mm / inches)	160 / 6.30	173 / 6.81
E (mm / inches)	161 / 6.34	201 / 7.91
F (mm / inches)	21 / 0.83	21 / 0.83
G (mm / inches)	24 / 0.94	24 / 0.94
H (mm / inches)	99 / 3.90	99 / 3.90
I (mm / inches)	112 / 4.41	112 / 4.41
J (mm / inches)	115 / 4.53	115 / 4.53
K (mm / inches)	250 / 9.84	250 / 9.84
M H7 (mm / inches)	20 / 0.79	20 / 0.79
N (mm / inches)	50 / 1.97	63 / 2.48
Weight (kg / lbs)	70 / 154	93 / 205
Clampings	160	200
Clamping field 0 ₁ (mm / inches)	0-314 / 0-12.36	0-314 / 0-12.36
Clamping field 0 ₂ (mm / inches)	110-420 / 4.33-16.54	110-420 / 4.33-16.54
Clamping field 0 ₃ (mm / inches)	180-490 / 7.09-19.29	180-490 / 7.09-19.29



Supplied with

- base body
- operator side pull spindle
- 1 set of plain jaws
- 1 handle
- 4 toe clamps
- instruction manual

