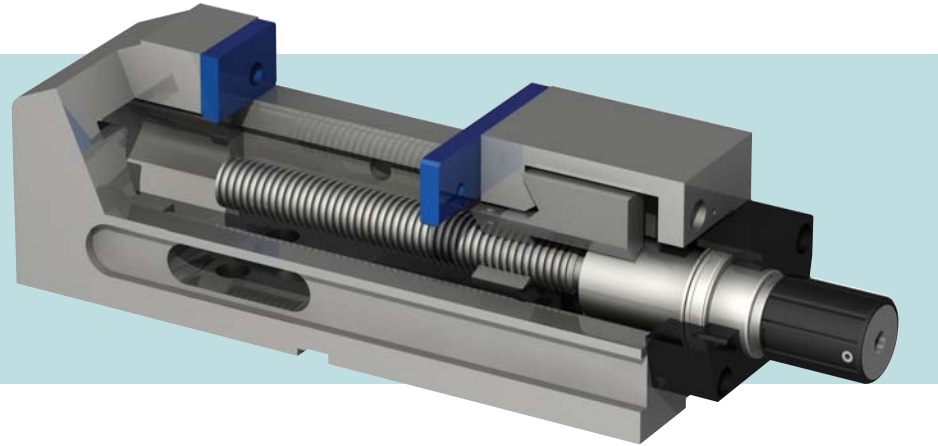


# high pressure manual vises

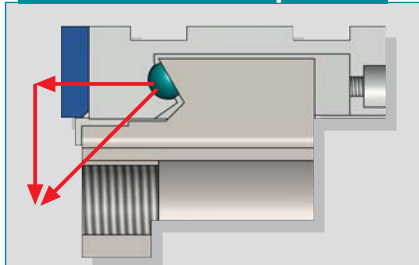
## Arnold Compact with Mechanical Booster

High Pressure ARNOLD COMPACT vises with MECHANICAL BOOSTER maintain their length irrespective of the size of the workpiece - ideal for use in machining centers.



- Suitable for working in vertical machining centers.
- 0.01mm (0.0004") clamping repeatability.
- Monoblock design avoids deformations due to high pressure and offers great rigidity.
- Large side openings for easy chip removal.
- Fitted with a high pressure mechanical intensifier.
- Clamping force is 2.5 to 5 tons (5,500 to 11,000 lbs), depending on model.
- Optional power regulator.
- Ideal for long machining cycles.
- Optional angle driver for handle clearance.

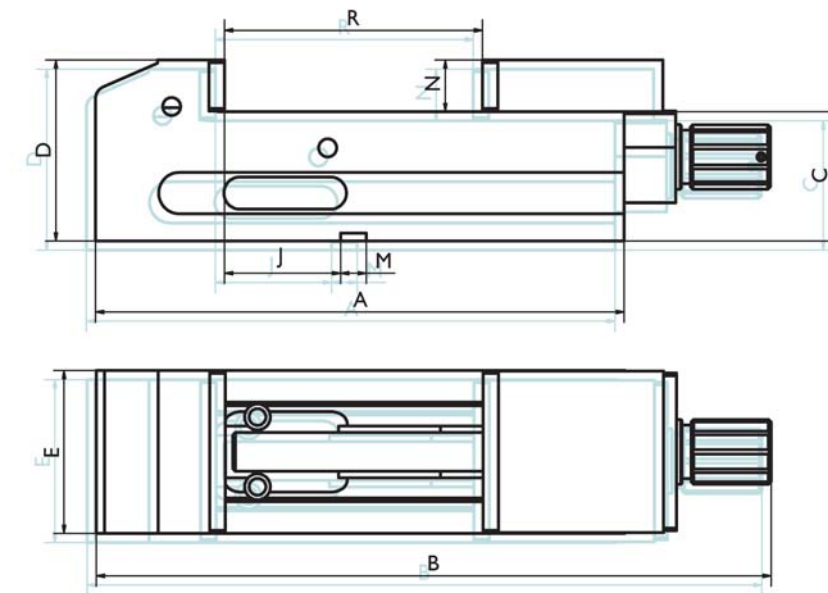
### Pull-Down Semi-sphere



The ARNOLD COMPACT has a descending clamp system to avoid jaw-lift. A semi-sphere installed between the moveable jaw and the spindle shoe creates downward pressure.

- This high pressure mechanical spindle does not require any maintenance, as long as the appropriate coolants are used.
- Ideal for large clamping and long clamping operations.
- The base has longitudinal and transversal keyways (20H7), to ensure the correct alignment of the table and the machine.

Size	090	125	160
Arnold Compact Mechanical	030 120 090	030 120 125	030 120 160
Arnold Compact Mechanical with regulator		030 130 125	030 130 160
Clamping force (kg / lbs)	2500 / 5500	4000 / 8800	5000 / 11000
A (mm / inches)	304 / 11.97	414 / 16.30	574 / 22.60
B (mm / inches)	391 / 15.39	523 / 20.59	683 / 26.89
B with regulator (mm / inches)		548 / 21.57	708 / 27.87
C-0.02 (mm / inches)	75 / 2.95	100 / 3.94	110 / 4.33
D (mm / inches)	115 / 4.53	140 / 5.51	160 / 6.30
E (mm / inches)	90 / 3.54	125 / 4.92	160 / 6.30
J (mm / inches)	40 / 1.57	90 / 3.54	115 / 4.53
M H7 (mm / inches)	20 / 0.79	20 / 0.79	20 / 0.79
N (mm / inches)	40 / 1.57	40 / 1.57	50 / 1.97
R (mm / inches)	0-135/0-5.31	0-200/0-7.87	0-314/0-12.36
Weight (kg / lbs)	16 / 35	35 / 77	70 / 154



### Supplied with

- base body
- mechanical spindle
- 1 set of plain jaws
- 1 handle
- 4 toe clamps
- instruction manual

