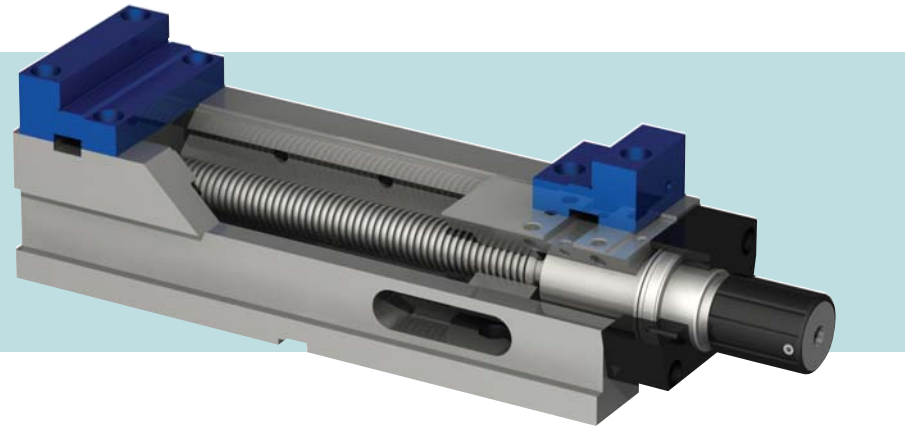


high pressure manual vises

Arnold MB2 with Mechanical Booster

High Pressure ARNOLD MB2 vises, maintain their length irrespective of the size of the work-piece, ideal for machining centers.



- Main components in nodular cast iron GGG70.
- Suitable for working in vertical machining centers.
- 0.01 mm (0.0004") clamping repeatability.
- Fitted with high pressure mechanical intensifier.
- Does not require any maintenance, as long as appropriate coolants are used.
- Double spindle chip protection: Spiral spring in front and a protection plate clamped to the spindle shoe in back.
- Clamping force is 4 tons (8,800 lbs).
- Constant clamping force ensures constant and repeatable positioning of work pieces day after day.
- Ideal for long machining cycles.
- Optional power regulator.
- Side openings for easy flushing of chips
- Optional angle driver for handle clearance.



- Designed to work with interchangeable jaws
- Standard jaws can be placed in two positions, obtaining great holding capacity as related to vise dimensions.
- Clamping field up to 330 mm (12.99")
- Optional machinable soft jaws to hold irregular shaped parts.

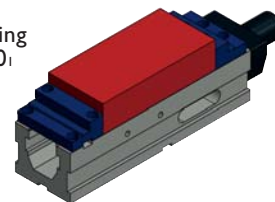


- Can be clamped to the table with the four standard toe clamps or by using four screws in the inside of the body.
- Available with optional 5X 125M high jaws for 5-axis machining.

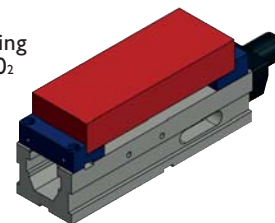


Clamping possibilities

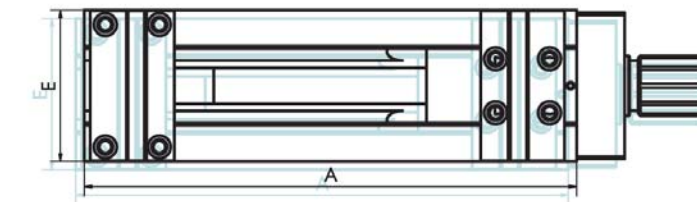
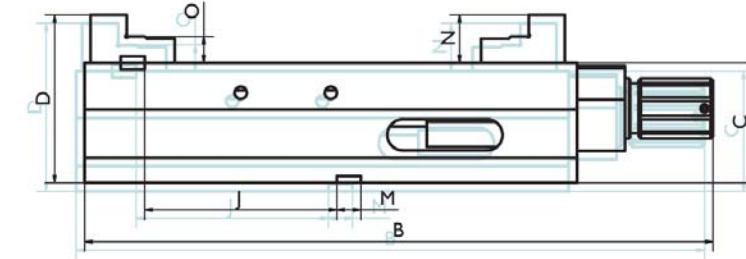
Clamping field 0₁



Clamping field 0₂



Size	125	125
Arnold MB2 Mechanical	060 121 125	
Arnold MB2 Mechanical with regulator		060 131 125
Clamping force (kg / lbs)	4000 / 8800	4000 / 8800
A (mm / inches)	410 / 16.14	410 / 16.14
B (mm / inches)	518 / 20.39	548 / 21.57
C (mm / inches)	100 - 0.02 / 3.94	100 - 0.02 / 3.94
D (mm / inches)	139 / 5.47	139 / 5.47
E (mm / inches)	126 / 4.96	126 / 4.96
J (mm / inches)	140 + 0.02 / 5.51	140 + 0.02 / 5.51
M (mm / inches)	20 H7 / 0.79	20 H7 / 0.79
N (mm / inches)	40 / 1.57	40 / 1.57
O (mm / inches)	22 / 0.87	22 / 0.87
Weight (kg / lbs)	35 / 77	35 / 77
Clamping field 0 ₁ (mm / inches)	0-250/0-9.84	0-250/0-9.84
Clamping field 0 ₂ (mm / inches)	80-330/3.15-12.99	80-330/3.15-12.99



Supplied with

- base body
- mechanical spindle
- 1 set of plain jaws
- 1 handle
- 4 toe clamps
- instruction manual

