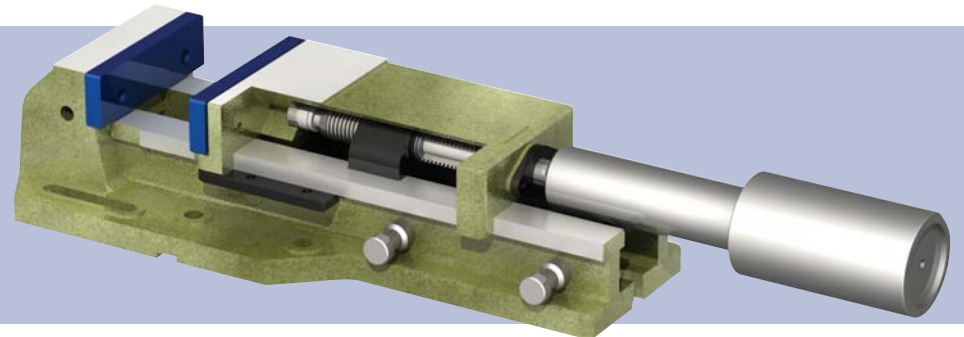


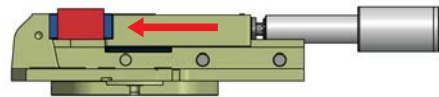
high pressure automatic vises

ARNOLD Classic Hydro-Pneumatic

ARNOLD HYDRO-PNEUMATIC high pressure vises can obtain a clamping force of up to 8 tons (17,600 lbs) with 6-bar (87 psi) compressed air.



- 0.01 mm (0.0004") clamping repeatability at the same pressure.
- Monoblock design, with the head and guides as one part virtually eliminates deformations due to high pressure.
- Large opening of up to 375 mm (14.76") - virtually unlimited when using the two part body.
- Automatically opens and closes 4 mm (0.16") to enable easy loading and unloading.
- Clamping force is 4 to 8 tons (8,800 to 17,600 lbs), depending on model.



- The force applied by the high pressure spindle is in the center line of the jaw to reduce risk of jaw lift.
- The compressed air must be clean and dry.
- Accepts all standard Arnold jaw types.

OPERATION

- Insert the first part and manually position the moveable jaw at about 2 to 3mm (0.08 to 0.12") from the part. This will ensure easy loading and secure clamping.
- The jaw movement of the vise can be controlled manually by means of a valve unit supplied with the vise, by a pedal or by the CNC control.
- Ideal for machining large series of work-pieces.

VERSIONS

1. Standard vise.

- Mounting to the machine table is carried out through the holes and slots.
- Can be supplied with a swivel base



2. Straight vise.

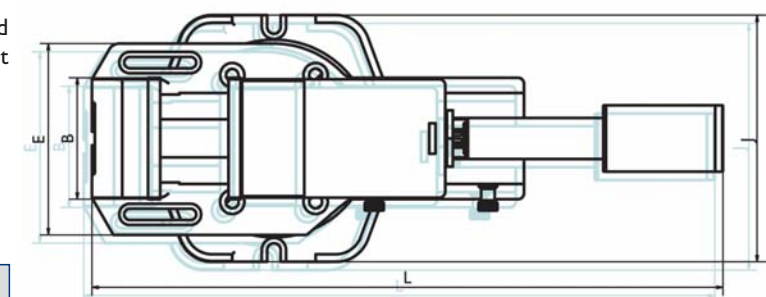
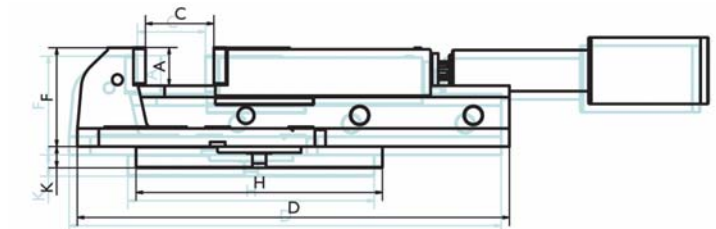
- The narrow body enables vises to be placed in closer proximity. Ideal for higher density machining and when holding large parts across several vises.



Size	125	160	200
Arnold Hydro-Pneumatic	010 600 125	010 600 160	010 600 200
Arnold Hydro-Pneumatic with swivel base	010 601 125	010 601 160	010 601 200
Arnold Straight Hydro-Pneumatic	010 602 125	010 602 160	010 602 200
Clamping force (kg / lbs)	4000 / 8800	5000 / 11000	8000 / 17600
A (mm / inches)	40 / 1.57	50 / 1.97	63 / 2.48
B (mm / inches)	125 / 4.92	160 / 6.30	200 / 7.87
C - Clamping field 1 (mm / inches)	0-105 / 0-4.13	0-155 / 0-6.10	0-210 / 0-8.27
C - Clamping field 2 (mm / inches)	100-205 / 3.94-8.07	150-305 / 5.90-12.01	165-375 / 6.50-14.76
D (mm / inches)	425 / 16.73	570 / 22.44	680 / 26.77
E (mm / inches)	195 / 7.68	250 / 9.84	300 / 11.81
F standard vise (mm / inches)	107 / 4.21	130 / 5.12	160 / 6.30
F straight vise (mm / inches)	112 / 4.41	139 / 5.47	164 / 6.46
L (mm / inches)	580-785 / 22.83-30.91	723-1028 / 28.46-40.47	815-1215 / 32.09-47.83
Vise weight (kg / lbs)	26 / 57	51 / 112	94 / 207
Base	800 450 125	800 450 160	800 450 200
H (mm / inches)	264 / 10.39	325 / 12.80	400 / 15.75
J (mm / inches)	270 / 10.63	325 / 12.80	400 / 15.75
K (mm / inches)	28 / 1.10	32 / 1.26	45 / 1.77
Base weight (kg / lbs)	8 / 18	15 / 33	32 / 70

Elements needed for the operation not supplied with the vise

- Connection to compressed air
- Filter unit, pressure gauge and lubricator of the air input.
- Note:** If using a control pedal: The set of valves supplied with the vise must be placed between the compressor and the pedal, not between the pedal and the vise.



Supplied with

- base body
- hydro-pneumatic spindle
- anti-return valve
- 1 set of plain jaws
- instruction manual

