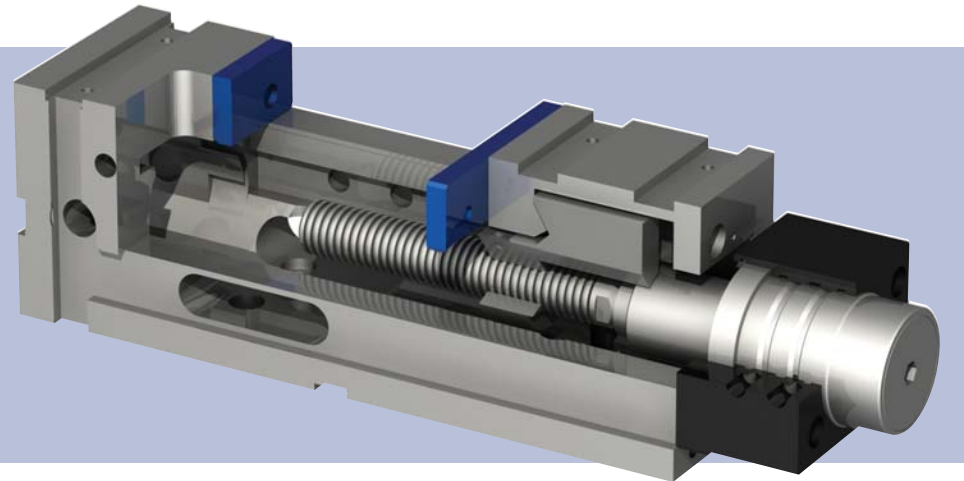


high pressure automatic vises

Arnold Mat "Automat"

High Pressure ARNOLD MAT AUTOMAT vises can obtain clamping force of up to 5 tons (11,000 lbs) using the hydraulic system of your machining center.

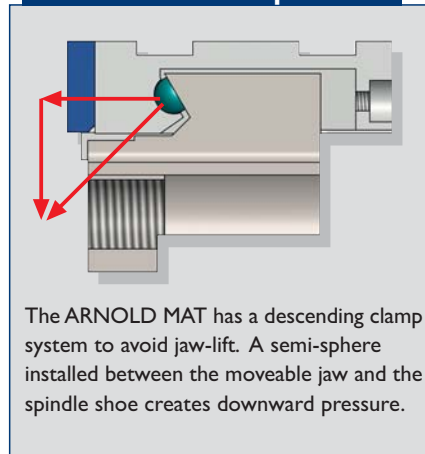


- Can be mounted on the base, on the side or vertically on the head.
- Suitable for working in horizontal and vertical machining centers.
- All surfaces ground with a parallelism and perpendicularity of 0.02 mm (0.0008").
- 0.01mm (0.0004") clamping repeatability.
- Monoblock design avoids deformations due to high pressure and offers great rigidity.
- Fitted with a high pressure single effect hydraulic intensifier.
- Clamping force is 4 or 5 tons (8,800 or 11,000 lbs) depending on size.
- Clamping force is directly proportional to the input oil pressure (see manual).
- Use the hydraulic system of your machining centers. No external hydraulic power unit is required!
- Automatic 4 mm (0.16") opening and closing movement.
- Ideal for machining large series of pieces.
- Side opening for easy chip removal.



- Optional top jaws mount in slots on the vise jaws to hold oversized parts.

Pull-down Semi-sphere



The ARNOLD MAT has a descending clamp system to avoid jaw-lift. A semi-sphere installed between the moveable jaw and the spindle shoe creates downward pressure.

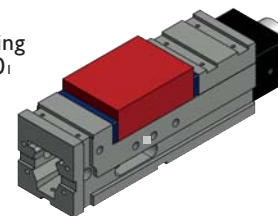
Elements needed for the operation not supplied with the vise

- Connection to the machining center's hydraulic system
- Connection hose
- Pressure control switch
- Pressure gauge
- Safety valve integrated into the unit
- ON – OFF switch.

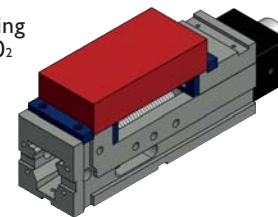
- This high pressure vise needs a 70 bar exterior oil supply, to obtain maximum clamping force.
- Most machining centers can supply a hydraulic supply system for tools with sufficient oil pressure to operate this vise.

Clamping possibilities

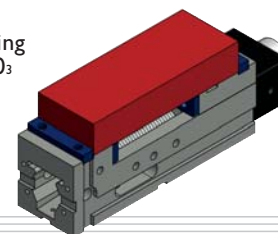
Clamping field 0₁



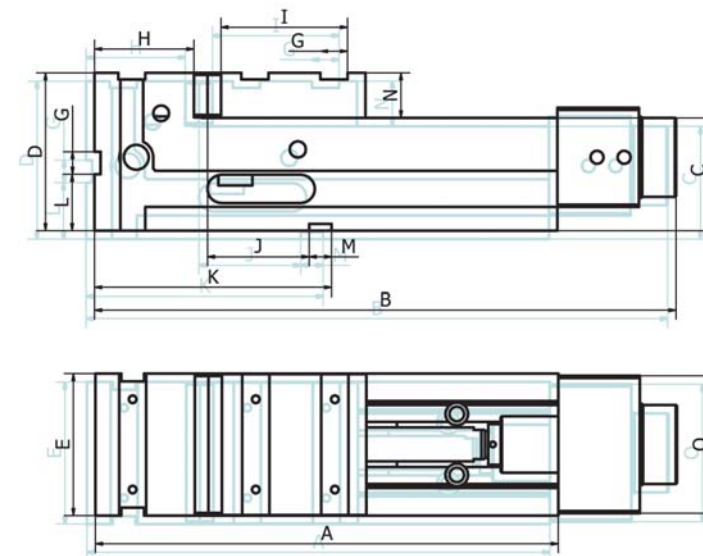
Clamping field 0₂



Clamping field 0₃



Size	125	160	200
ARNOLD MAT automat	070 200 125	070 200 160	070 200 200
Clamping force (kg / lbs)	4000 / 8800	5000 / 11000	5000 / 11000
A (mm / inches)	410 / 16.14	570 / 22.44	570 / 22.44
B (mm / inches)	503 / 19.80	663 / 26.10	663 / 26.10
C - 0.02 (mm / inches)	100 / 3.94	110 / 4.33	110 / 4.33
D (mm / inches)	140 / 5.51	160 / 6.30	173 / 6.81
E (mm / inches)	126 / 4.96	161 / 6.34	201 / 7.91
G (mm / inches)	24 / 0.94	24 / 0.94	24 / 0.94
H (mm / inches)	88 / 3.46	99 / 3.90	99 / 3.90
I (mm / inches)	112 / 0.47	112 / 0.47	112 / 0.47
J+0.02 (mm / inches)	90 / 3.54	115 / 4.53	111 / 4.37
K (mm / inches)	210 / 8.27	250 / 9.84	250 / 9.84
L (mm / inches)	50 / 1.97	60 / 2.36	60 / 2.36
M H7 (mm / inches)	20 / 0.79	20 / 0.76	20 / 0.76
N (mm / inches)	40 / 1.57	50 / 1.97	63 / 2.48
Weight (kg / lbs)	35 / 77	70 / 154	93 204.6
Clampings	125	160	200
Clamping field 0 ₁ (mm / inches)	0-200 / 0-7.87	0-314 / 0-12.36	0-314 / 0-12.36
Clamping field 0 ₂ (mm / inches)	80-285 / 3.15-11.22	110-420 / 4.33-16.54	110-420 / 4.33-16.54
Clamping field 0 ₃ (mm / inches)	150-355 / 5.91-13.98	180-490 / 7.09-19.29	180-490 / 7.09-19.29



Supplied with

- base body
- "Automat" spindle
- 1 set of plain jaws
- 1 handle
- 4 toe clamps
- instruction manual

