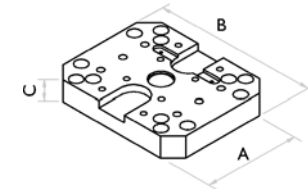
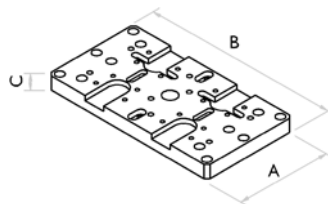


# structures for horizontal machining centers

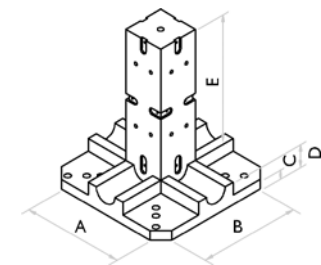
## Arnold Mat structures for HMC applications



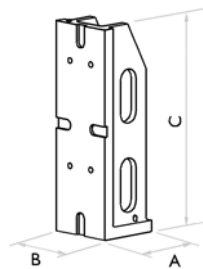
Size	090	125	160	200
<b>Duo Base Plate</b>	<b>890 010 090</b>	<b>890 010 125</b>	<b>890 010 160</b>	<b>890 010 200</b>
A (mm / inches)	236 / 9.30	290 / 11.42	290 / 11.42	360 / 14.17
B (mm / inches)	236 / 9.30	234 / 9.21	330 / 12.99	360 / 14.17
C (mm / inches)	45 / 1.77	45 / 1.77	45 / 1.77	45 / 1.77
Weight (kg / lbs)	16 / 35	17 / 37	20 / 44	43 / 95



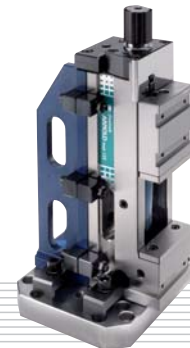
Size	090	125	160	200
<b>Double Duo Base Plate</b>	<b>890 020 090</b>	<b>890 020 125</b>	<b>890 020 160</b>	<b>890 020 200</b>
A (mm / inches)	410 / 16.14	450 / 17.72	556 / 21.89	620 / 24.41
B (mm / inches)	220 / 8.66	290 / 11.42	310 / 12.20	336 / 13.23
C (mm / inches)	42 / 1.65	42 / 1.65	42 / 1.65	42 / 1.65
Weight (kg / lbs)	29 / 57	54 / 119	58 / 128	62 / 136



Size	090	125	160	200
<b>Cubed 4x90°</b>	<b>890 030 090</b>	<b>890 030 125</b>	<b>890 030 160</b>	<b>890 030 200</b>
A (mm / inches)	400 / 15.75	400 / 15.75	500 / 19.69	547 / 21.54
B (mm / inches)	400 / 15.75	400 / 15.75	500 / 19.69	547 / 21.54
C (mm / inches)	50 / 1.97	50 / 1.97	50 / 1.97	50 / 1.97
D (mm / inches)	70 / 2.76	70 / 2.76	70 / 2.76	70 / 2.76
E (mm / inches)	300 / 11.81	410 / 11.81	570 / 22.44	570 / 22.44
Weight (kg / lbs)	631 / 139	117 / 257	213 / 469	271 / 596

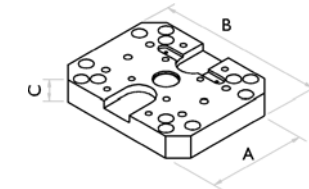


Size	090	125	160	200
<b>Support bracket at 90°</b>	<b>991 500 090</b>	<b>991 500 125</b>	<b>991 500 160</b>	<b>991 500 200</b>
A (mm / inches)	105 / 4.13	140 / 5.51	150 / 5.91	173 / 6.81
B (mm / inches)	91 / 3.58	126 / 4.96	161 / 6.34	201 / 7.91
C (mm / inches)	300 / 11.81	410 / 11.81	570 / 22.44	570 / 22.44
Weight (kg / lbs)	10 / 22	18 / 39	40 / 88	67 / 147

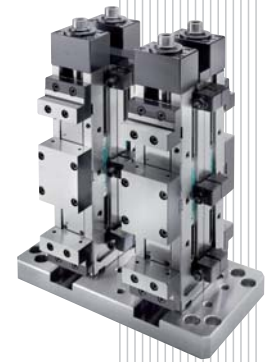
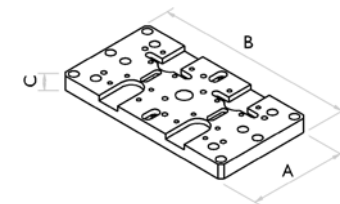


## Arnold Twin structures for HMC applications

Size	090	125
<b>Duo Base Plate</b>	<b>890 014 090</b>	<b>890 014 125</b>
A (mm / inches)	230 / 9.06	290 / 11.42
B (mm / inches)	230 / 9.06	234 / 9.21
C (mm / inches)	45 / 1.77	45 / 1.77
Weight (kg / lbs)	16 / 35	17 / 37



Size	090	125
<b>Double Duo Base Plate</b>	<b>890 024 090</b>	<b>890 020 425</b>
A (mm / inches)	410 / 16.14	450 / 17.72
B (mm / inches)	220 / 8.66	290 / 11.42
C (mm / inches)	42 / 1.65	42 / 1.65
Weight (kg / lbs)	29 / 64	54 / 119



Size	090	125
<b>Cubed 4x90°</b>	<b>890 034 090</b>	<b>890 034 125</b>
A (mm / inches)	400 / 15.75	400 / 15.75
B (mm / inches)	400 / 15.75	400 / 15.75
C (mm / inches)	50 / 1.97	50 / 1.97
D (mm / inches)	70 / 2.76	70 / 2.76
E (mm / inches)	400 / 15.75	480 / 18.90
Weight (kg / lbs)	63 / 139	117 / 257

